

Tetbury Rail Land Regeneration Trust

Friends of the Goods Shed Newsletter No 46 – November 2021



Community, Creativity, Culture

Tetbury Community Environment Day

On 31st October the Goods Shed was very proud to host the Tetbury Community Environment Day to which the whole community was invited with no admission cost, thanks to generous sponsorship by



the Sir Martin Smith Foundation and Renishaw Plc. It was an opportunity to see what everybody can do to help our environment and find out what is already being done locally. With COP26 being held simultaneously it was very timely and apposite as well as showing that we must all take responsibility, even at the individual level. Subjects that the exhibitors were happy to discuss ranged across recycling, clean energy generation and wildlife conservation. Exhibitors included Gloucestershire Wildlife Trust, Greening Tetbury, Cotswold District Council, Royal Agricultural University and Young Gloucestershire. Green and ethically sourced products such as bee-houses and bird feeders were available to buy from Wildlife Work and Wild Carrot E-bikes had their electric bikes on display; both of these companies are based at Chavenage.

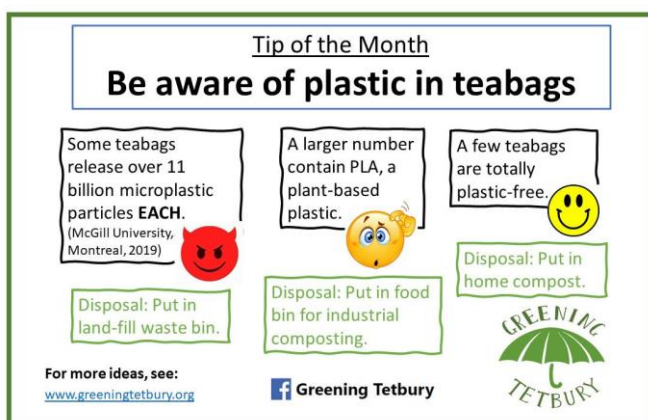


of Yellow Lighted Bookshop was at a table with a wide range of titles full of green ideas. In addition, there was a display of paintings and artworks created by pupils of Sir William Romney's School on the theme of working together to mitigate the impact of climate change and rebuild ecological sustainability and resilience.

In the evening there was an open forum chaired by one of our Trustees, Carol Paton, with a panel consisting of Dr Sophie Carabine OBE, a lecturer in sustainable agriculture at the Royal Agricultural University, Chris Crookall-Fallon, Cotswold District Council's Head of Climate Action and responsible

for CDC's energy policy, Dr Gary Raw, an environmental psychologist specialising in energy saving in the home and Sir Martin Smith, an eminent scientist and businessman. Many interesting subjects were raised and well fielded by the panel.

And staying with our theme, we bring you the latest tip from Greening Tetbury.



Raffle Prizes

In conjunction with the community event, Off the Rails, held in September our fundraiser *par excellence*, Jill Dodge, organised a raffle This included getting donations of all the prizes from our very generous local business community and spending many hours selling tickets, all for the benefit of the Goods Shed. Well done, Jill. The draw was held on 27th October with 19 lucky prize winners. For the full results see the end of this newsletter.

Trustee Opportunity

Tetbury Goods Shed Arts Centre has an ambitious vision to make the Goods Shed into a regional centre of arts excellence as well as a place where everyone can have a good time.

We are seeking Trustees to join our team who have a keen interest in community projects and would particularly welcome expertise in human resources, marketing, fundraising, education and community development. We are keen to hear from you whether you have previous trustee experience or if you are looking for trustee experience to gain new skills to broaden your professional development.

It's an exciting time to join the team as the Goods Shed has quickly established itself as a vibrant arts venue in the Cotswolds with high aspirations for our future development and continued success. The Shed is run almost entirely by volunteers, and we take a huge pride in the venue and its events.

To apply please send a CV and covering letter to Claire Jefferies via email goods.shed@btinternet.com.

More information about the Tetbury Goods can be found by visiting our website www.shed-arts.co.uk

Goods Shed Events

The first October event was a concert by Alan Brinley Shaw playing classical guitar. Alan gave us a virtuoso performance of several less well-known guitar compositions and at least one written for the cello. On the 24th the U3A Play Reading Group presented "The Black Pit" a play written by two members, Jeremy North and Stephanie Dale. during lock-down. The play was about the effects of the Black Death on a village in Gloucestershire and Jane Haines from the History of Tetbury Society was on hand to talk about what is known about the impact on Tetbury of the Great Plague in 1666. The U3A kindly donated all ticket sales to the Goods Shed.

At the end of the month Keith Thompson and the Band entertained an audience of over 70 with his Blues and Rock performance. We are gradually getting back to normal at the Goods Shed. We would love to see some more of you at some of the upcoming events.

Cinema

Although due for showing on the 7th October, Sound of Metal had no takers and so the first film of the month shown was Portrait of a Lady on Fire 14 Oct. This critically acclaimed the film was a French historical romantic drama, which might account for the modest attendance. The Last Bus on 21 Oct was surprisingly popular for a weepy. Timothy Spall goes on a pilgrimage from John O'Groats, where he has lived with his wife for 50 years, to their home village of Lands End. He uses his free bus pass to make the journey, meeting some nice people and some real stinkers on the way. If The Last Bus was a weepy then Supernova on 28th Oct was a waterfall of tears. Colin Firth and Stanley Tucci play an aging gay couple with Stanley's character suffering from dementia. A bit too depressing for me.

Other Offerings

October Talks. On 6th Oct John Andrews gave a very interesting talk on prime numbers and his search to become the first in the world to create a formula that will predict them. Alas, his quest was in vain, but in trying he came upon some very beautiful patterns generated by his Excel spreadsheet plotting the early prime numbers. Towards the end of the month Fiona James gave the third lecture in her series discussing famous paintings and their artists. This month it was Renoir.

Just Jive. Just Jive took a well-deserved break at the end of the month, but they are back with a new series of sessions starting 2 Nov.

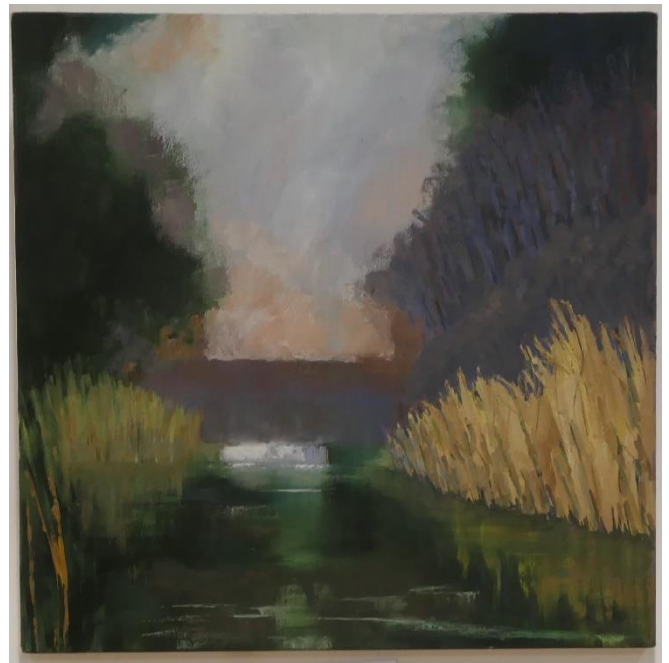
Christmas at the Goods Shed. I don't normally advertise future events, but Christmas is coming! Don't miss the Christmas Craft Fayre on 4th and 5th Dec and the Tea Concert on the 8th. We had to cancel Carols at the Goods Shed last year but it will be back on the 17th. Finally, anyone with young children or grandchildren get your tickets now for the Christmas Pantomime on the 30th December. You know you want to...

200 Club – Grand Draw

The ninth draw of the 200 Club took place on 1 November. The winner of £100 was Meg Atkinson and 2nd and 3rd were Jill Nyman and Heather Witchell. The 200 Club is the only fundraising venture we have under way at the moment, and we still have room for more members, so do sign up if you have not yet done so. Half of the money received will be given in prizes and the other half will go to help the Goods Shed. You can join at any time – for only £60 - and be eligible for the draw every month for a year. Go to the Goods Shed website and follow the instructions for joining the 200 Club or email me if you prefer.

Exhibition

The October art exhibition in the Goods Shed had paintings by local artist, Angie Spencer. Categorising her works as Contemporary Romantic Landscapes, music (she is leader of the Stroud Symphony Orchestra) often informs her work and many of her landscapes are often direct responses to pieces of classical music. Angie begins all her paintings with contemplative *plein air* sketches. Although born in Scarborough, Angie now lives near Stroud and you might recognise some of her paintings as being views of the Stroudwater navigation.



Signal Box & Signal Post



The signal box now has a fitted floor but the weather is hampering progress with the roof and its slate tiling. In parallel we are getting on with covering the base walls with weatherboarding. Again, the wet weather limits our ability to paint. We shall be painting the finials, barge boards, doors and window panels with GWR No 3 (dark stone) and the featherboarding with GWR No 1 (light stone), see the "From the Archives" item below. There is one board at the carriage end that has already been painted with No 1 and the finial, which has been up for a week or so, is painted with GWR No 3.

Meanwhile Nigel Berry, Grayham Cleaver and Will Cook have erected the signal post on to its base. You will all recognise, having read my article on signals in the July newsletter, that the signal is an upper quadrant stop or danger signal. It is an obvious interloper as GWR was almost universally lower

quadrant; it is actually an ex-LNER signal. The question is which way should it be facing for maximum heritage value?

From the Archive

As the signal box is hopefully soon to be revealed in its new colours, I thought it might be interesting – all right, possibly only to some - to include information on the colour schemes used by the Great Western Railway (GWR) during its existence.

GWR Station Colour Schemes

The GWR building livery remained largely unchanged from Victorian times to the end of the grouping period in 1948, except that a colour officially called 'chocolate' was widely used in the 19th century, but this fell out of use after 1900. The chocolate and cream livery familiar to older readers was that of British Railways Western Region.

The three basic GWR colours were Stone No. 1, or light stone, Stone No. 2 and Stone No. 3 or dark stone. Stone No. 1 was a warm buff colour said to have been a copy of Cotswold stone. Stone No. 2 was a darker, browner buff while the dark stone was a mid-brown with a reddish tint, again a warm colour. From about 1900 Stone No. 2 ceased to be used following the introduction of ready mixed paints.

Stone No. 1 or Stone No. 2 could be used for large areas like planking and canopies, with the darker Stone No. 3 for doors, metalwork and the like. According to the book 'Great Western Way', if Stone No. 1 was used for the topcoat, Stone No. 2 was used as the undercoat and vice versa, so that the other colour showed through when the paint was worn thereby giving an indication that repainting was due. All three shades were made by mixing iron oxide (ochre) and white lead with linseed oil; the greater the amount of iron oxide, the darker the shade. Great Western Way suggests that Stone No. 2 was the most widely used until the 1900's but gives no

evidence for that statement, and it should be noted that the official specification for signal boxes, dated 1907, makes no mention whatsoever of Stone No. 2. The other official shade was 'chocolate', a warm rich maroon/brown with a reddish tint and this was used more than Stone No. 3 on signal boxes up to around 1907 and the same may have applied to stations before that time.

By 1907, and possibly before, the GWR was buying ready mixed paints in tins; one supplier was T & R Williamson's Ltd and their records make no mention of Stone No. 2 which suggests that from that time on only Stone No. 1 and Stone No. 3 were used, certainly most colour from the 1930's, 40's and 50's show a light shade for planking etc. which indicates Stone No. 1. Presumably the GWR decided when they moved to ready mixed paints that there was no point using three or four shades when two would do the same job perfectly well, so the chance was taken to simplify things. Throughout both periods window frames and glazing bars were always white.

In 1931 the next change was made to the livery when a maroon was introduced for guttering, downpipes and hardwearing areas like steps on footbridges. Everything else remained as it had always been. Some wooden buildings were painted with the lower walls in chocolate brown in later years, this seems to have been the only use made of the chocolate colour during this period. Fencing was painted in either Stone No. 1 or No. 2 to match the station building, but gates could be white to make them stand out.

Before 1898 signal box nameboards were Stone No. 3 with chocolate lettering and in the early days this was done with separate cast iron letters screwed to the planking. After 1898 nameboards were black and white. The cast iron nameboards came into use in January 1891 although initially their use was not widespread. By the mid 1890's pretty much every signal box had been fitted with the new nameboards and it must quickly have become clear that the old colour scheme was not satisfactory for the smaller lettering on the new nameboards resulting in new regulations issued in 1898.

Many thanks to Pete Smith (<https://www.stationcolours.com/>) from whom most of the above information came.

Tetbury Signal Box. We intend to repaint the Tetbury Signal Box to reflect the period just before it was removed from the platform in 1926. Hence the planking will be GWR No 1 Light Stone and the barge boards, door frames etc., will be GWR No. 3 Dark Stone (both obtained from T & R Williamson, still in business today although now part of T Howse Ltd). We have a replica aluminium name board in black and white which will eventually be put up.

Right: The finial on the signal box is newly painted in GWR No 3 Dark Stone.



Contact me if you have any questions or wish to contribute to the newsletter: David Walker, 01666 500137 or opheliatheboat@gmail.com.

RAFFLE PRIZES

have all been generously given by local businesses

Raffle to be drawn on 27th October.

1. 3 month's membership to Vinotopia Wine Club.
Winner Nigel Berry - ticket 0047
2. Sunday lunch for 2 at no 65 Tetbury
Winner Rob Gibbs - ticket 0573
3. Tea for two at the Close Hotel
Ken Munson - ticket 0513
4. Shampoo and blow dry at Mayner's
Sally Roberts - Ticket 0023
5. Lunch for 2 at The Ormond
Lesley Greensmith - ticket 0544
6. £50. voucher for Treacle George
Michelle Dicks - 0715
7. £25. voucher for Tesco's Ticket
Joe Stevens - ticket 0820
8. Lovely bag from French Grey Ticket
Pam Neely - 0019
9. 30 minute golf lesson at Minchinhampton Golf Club with golf professional Kirsty Taylor.
Dot Stringer ticket 0890
10. Champagne afternoon tea for 4 people at The Snooty Fox
Nigel Berry - ticket 0027
11. Bottle of wine
Mary Cambell - ticket 0201
12. Bottle of wine
Helen Pye - ticket 0627
13. 2 tickets for 2 Goods Shed Cinema
Michelle Dicks - ticket 0711
14. 2 tickets for 2 Goods Shed Cinema
David Tonner - ticket 0744
15. 2 tickets for 2 Goods Shed Cinema
Cathryn Ball - ticket 0092
16. Cream tea for 2 Whistle-stop cafe.
G. Clarke - Ticket 0777
17. Rose Bush donated by Blue Diamond Garden Centre
Tara Niblett - ticket 0314
18. Box of Thorntons Chocolates
Geoff (Stroud Foot Clinic) - ticket 003
19. Basket full of fresh Veg. from Ros Tetbury Goods Shed.
Sandra Gardina - ticket 0688